

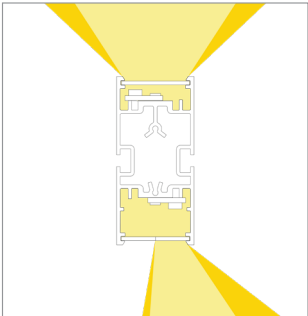
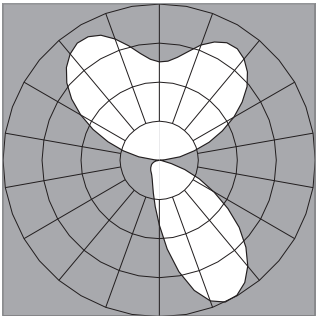
IES Report
DoubleBox™ | 107 | 120° Batwing, up | 85° Asymmetric, down | 80 CRI | LO

107-DB-XX-4-48-XX-XX-XX-XX-X-X-Z-LO-35-G1A1-X-BL-X

	2700K	3000K	3500K	4000K
Efficacy - Lumens per Watt	67	69	70	71
Total Lumens, 4' rail length (1219mm)	1975	2037	2079	2120
Lumens per foot (305mm)	494	509	520	530
Lumens per foot UP (305mm)	350	361	368	376
Lumens per foot DOWN (305mm)	144	149	152	155
Input Power (W), 4' rail length (1219mm)	29.9	29.9	29.9	29.9
Watts per foot (305mm)	7.5	7.5	7.5	7.5
CRI	85	85	85	85

Due to the large number of options in Vode's product offering, most Vode IES reports are factored reports prepared from source reports. Source reports are the IES test reports prepared for Vode by an NVLAP accredited photometric test laboratory. Factored reports are based on data from the Vode source reports.

If the data above is in black, it is directly from a Vode source report. If it is in grey, it is factored from Vode source reports. Reference details on Vode source reports can be found on the [IES File Finder](#) page on [vode.com](#).



IES Report

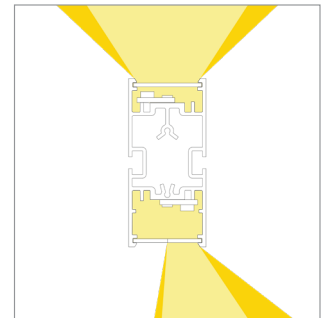
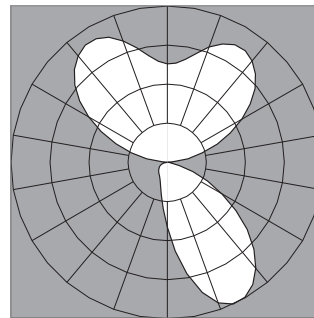
DoubleBox™ | 107 | 120° Batwing, up | 85° Asymmetric, down | 80 CRI | SO

107-DB-XX-4-48-XX-XX-XX-XX-X-X-Z-SO-35-G1A1-X-BL-X

	2700K	3000K	3500K	4000K
Efficacy - Lumens per Watt	83	85	87	89
Total Lumens, 4' rail length (1219mm)	3950	4075	4158	4241
Lumens per foot (305mm)	987	1019	1039	1060
Lumens per foot UP (305mm)	700	722	736	751
Lumens per foot DOWN (305mm)	288	297	303	309
Input Power (W), 4' rail length (1219mm)	48.1	48.1	48.1	48.1
Watts per foot (305mm)	12.1	12.1	12.1	12.1
CRI	85	85	85	85

Due to the large number of options in Vode's product offering, most Vode IES reports are factored reports prepared from source reports. Source reports are the IES test reports prepared for Vode by an NVLAP accredited photometric test laboratory. Factored reports are based on data from the Vode source reports.

If the data above is in black, it is directly from a Vode source report. If it is in grey, it is factored from Vode source reports. Reference details on Vode source reports can be found on the [IES File Finder](#) page on [vode.com](#).



IES Report

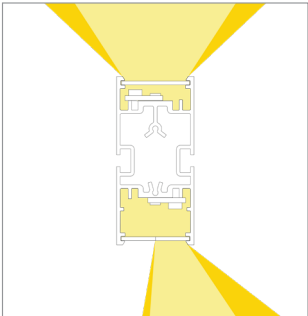
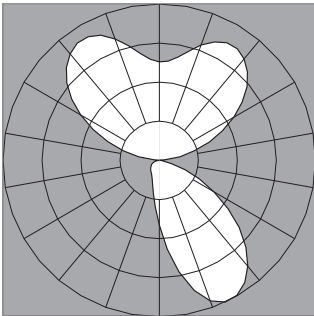
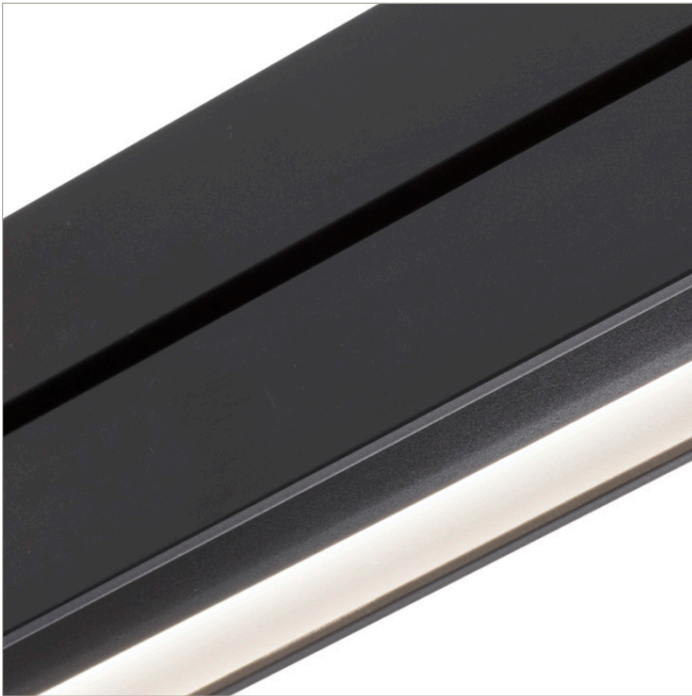
DoubleBox™ | 107 | 120° Batwing, up | 85° Asymmetric, down | 80 CRI | HO

107-DB-XX-4-48-XX-XX-XX-XX-X-X-Z-HO-35-G1A1-X-BL-X

	2700K	3000K	3500K	4000K
Efficacy - Lumens per Watt	77	79	81	82
Total Lumens, 4' rail length (1219mm)	7505	7742	7900	8058
Lumens per foot (305mm)	1876	1935	1975	2014
Lumens per foot UP (305mm)	1329	1371	1399	1427
Lumens per foot DOWN (305mm)	547	565	576	588
Input Power (W), 4' rail length (1219mm)	98.4	98.4	98.4	98.4
Watts per foot (305mm)	24.7	24.7	24.7	24.7
CRI	85	85	85	85

Due to the large number of options in Vode's product offering, most Vode IES reports are factored reports prepared from source reports. Source reports are the IES test reports prepared for Vode by an NVLAP accredited photometric test laboratory. Factored reports are based on data from the Vode source reports.

If the data above is in black, it is directly from a Vode source report. If it is in grey, it is factored from Vode source reports. Reference details on Vode source reports can be found on the [IES File Finder](#) page on [vode.com](#).



IES Report

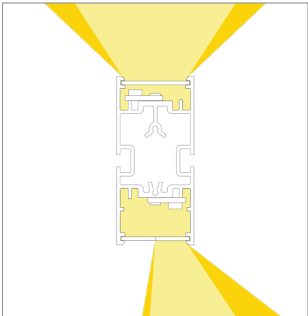
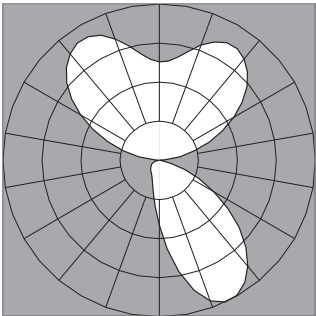
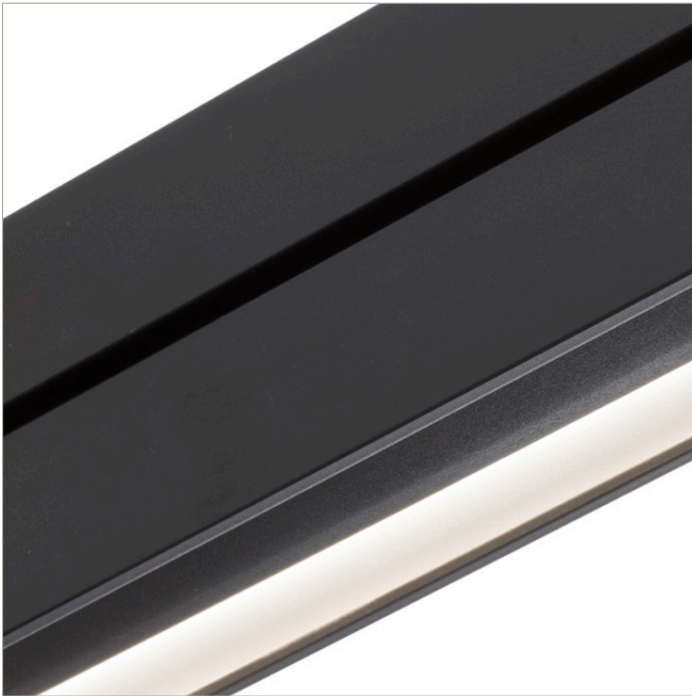
DoubleBox™ | 107 | 120° Batwing, up | 85° Asymmetric, down | 90 CRI | LO

107-DB-XX-4-48-XX-XX-XX-XX-X-X-Z-LO-359-G1A1-X-BL-X

	2700K	3000K	3500K	4000K
Efficacy - Lumens per Watt	57	59	60	62
Total Lumens, 4' rail length (1219mm)	1703	1756	1792	1828
Lumens per foot (305mm)	426	439	448	457
Lumens per foot UP (305mm)	302	311	317	324
Lumens per foot DOWN (305mm)	124	128	131	133
Input Power (W), 4' rail length (1219mm)	29.9	29.9	29.9	29.9
Watts per foot (305mm)	7.5	7.5	7.5	7.5
CRI	96	96	96	96

Due to the large number of options in Vode's product offering, most Vode IES reports are factored reports prepared from source reports. Source reports are the IES test reports prepared for Vode by an NVLAP accredited photometric test laboratory. Factored reports are based on data from the Vode source reports.

If the data above is in black, it is directly from a Vode source report. If it is in grey, it is factored from Vode source reports. Reference details on Vode source reports can be found on the [IES File Finder](#) page on [vode.com](#).



IES Report

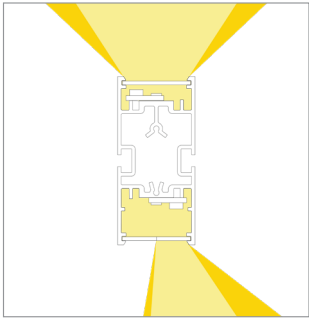
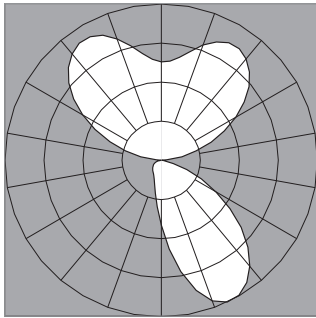
DoubleBox™ | 107 | 120° Batwing, up | 85° Asymmetric, down | 90 CRI | SO

107-DB-XX-4-48-XX-XX-XX-XX-X-X-Z-SO-359-G1A1-X-BL-X

	2700K	3000K	3500K	4000K
Efficacy - Lumens per Watt	71	73	75	76
Total Lumens, 4' rail length (1219mm)	3405	3513	3584	3656
Lumens per foot (305mm)	851	878	896	914
Lumens per foot UP (305mm)	603	622	635	648
Lumens per foot DOWN (305mm)	248	256	261	267
Input Power (W), 4' rail length (1219mm)	48.12	48.12	48.12	48.12
Watts per foot (305mm)	12.1	12.1	12.1	12.1
CRI	96	96	96	96

Due to the large number of options in Vode's product offering, most Vode IES reports are factored reports prepared from source reports. Source reports are the IES test reports prepared for Vode by an NVLAP accredited photometric test laboratory. Factored reports are based on data from the Vode source reports.

If the data above is in black, it is directly from a Vode source report. If it is in grey, it is factored from Vode source reports. Reference details on Vode source reports can be found on the [IES File Finder](#) page on [vode.com](#).



IES Report

DoubleBox™ | 107 | 120° Batwing, up | 85° Asymmetric, down | 90 CRI | HO

107-DB-XX-4-48-XX-XX-XX-XX-X-X-Z-HO-359-G1A1-X-BL-X

	2700K	3000K	3500K	4000K
Efficacy - Lumens per Watt	66	68	70	71
Total Lumens, 4' rail length (1219mm)	6470	6674	6810	6946
Lumens per foot (305mm)	1617	1668	1703	1737
Lumens per foot UP (305mm)	1146	1182	1206	1230
Lumens per foot DOWN (305mm)	472	487	497	507
Input Power (W), 4' rail length (1219mm)	98.44	98.44	98.44	98.44
Watts per foot (305mm)	24.7	24.7	24.7	24.7
CRI	96	96	96	96

Due to the large number of options in Vode's product offering, most Vode IES reports are factored reports prepared from source reports. Source reports are the IES test reports prepared for Vode by an NVLAP accredited photometric test laboratory. Factored reports are based on data from the Vode source reports.

If the data above is in black, it is directly from a Vode source report. If it is in grey, it is factored from Vode source reports. Reference details on Vode source reports can be found on the [IES File Finder](#) page on [vode.com](#).